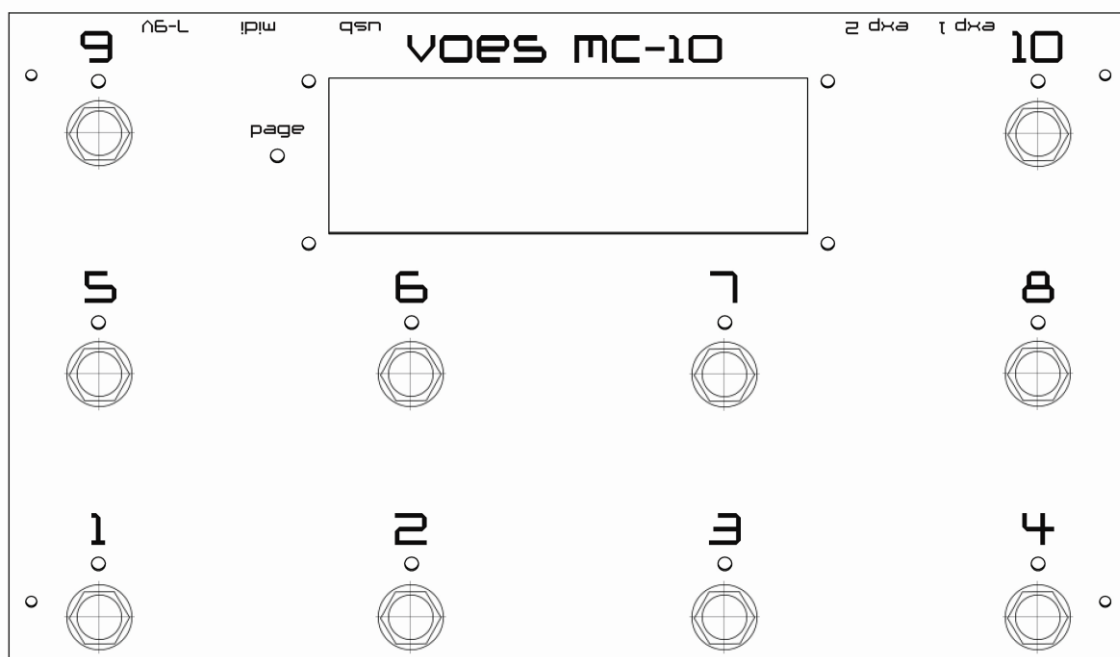
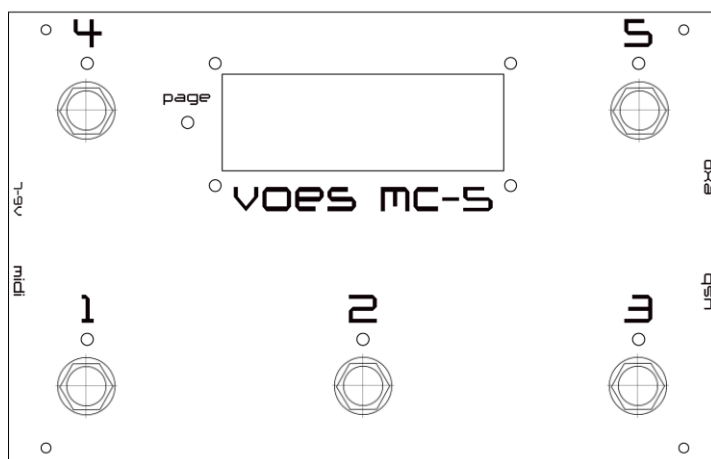
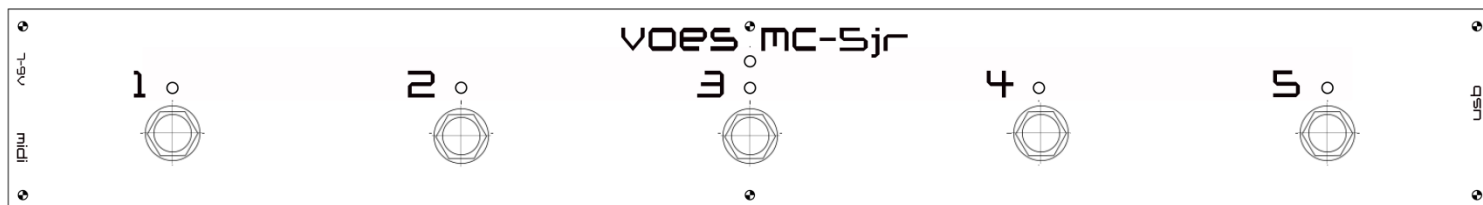




# Voës Midi Controllers

## MC-5jr, MC-5 & MC-10

### user manual v 1.1.6



# 1. Introduction

The **MC-5jr**, **MC-5** and **MC-10** are compact, intelligent and user-friendly Midi Controllers.

## Common features:

- 7-pin MIDI out
- Power: 7-9v AC/DC. Minimum 100mA (MC-5jr), 200mA (MC-5), 250mA (MC-10)  
2.1mm connector or Midi-7 (*power supply not included*)
- USB connection for easy-to-use editor
- 4 commands for each button
- 19 available commands: None, Preset (PC), CC on/off, CC off/on, CC on only, CC off only, CC custom, Expr 1 CC swap, Auto On CC swap, Button on/off, All Other Leds Off, Scenes, Bank down, Bank up, Program down, Program up, Preset Select, Bank Select and Page select.
- Advanced commands: Global, Steps and Groups
- 2 pages and press-and-hold function
- Suited for scenes (*Fractal Audio Systems*™)

## MC-5jr unique features:

- 5 hardware buttons, 6 leds (5 bicolor)
- No Expression Pedal
- No LCD display
- 2 pages with each 5 custom programmable software buttons
- Dimensions approx.: 40cm x 5,5cm
- Weight approx.: 480gr

## MC-5 unique features:

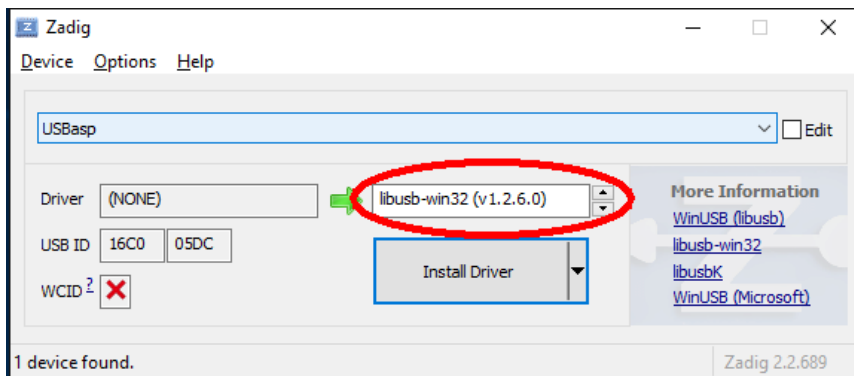
- 5 hardware buttons, 6 leds (5 bicolor)
- 1 input for Expression Pedal
- 2x16 Normal LCD display
- 2 pages with each 5 custom programmable software buttons
- Auto engage/disengage Expr. Pedal 1
- Dimensions approx.: 18cm x 11,5cm
- Weight approx.: 470gr

## MC-10 unique features:

- 10 hardware buttons,  
11 leds (10 bicolor)
- 2 inputs for Expression Pedals
- 2x16 Big LCD display
- 2 pages with each 10 custom programmable software buttons
- Auto engage/disengage Expr. Pedal 1
- Dimensions approx.: 25cm x 15cm
- Weight approx.: 890gr

## 2. Installation

1. Download the latest editor, driver, firmware and manual on [www.vo.es.be](http://www.vo.es.be).
2. Unzip the file.
3. Connect the **MC-5jr/5/10** to your computer (Windows 7 or higher).  
Let Windows detect the device (it will report driver not found). If a window pops up asking to search for a driver, just close it or click *Cancel*.
4. Run **Vo.es MC-driver** (located in the folder *manual and driver*).



Do not update if asked.  
Select **libusb-win32 (v1.2.6.0)** and click Install Driver.

5. Start **Vo.es MC-editor**.  
If you get an error, you will need to install **Microsoft Dot Net Framework 4** or higher .  
( <https://www.microsoft.com/en-us/download/details.aspx?id=17851> )

## 3. The Editor

(Beside the normal version of the Editor, a special 1024x600 version is available for smaller screens.)

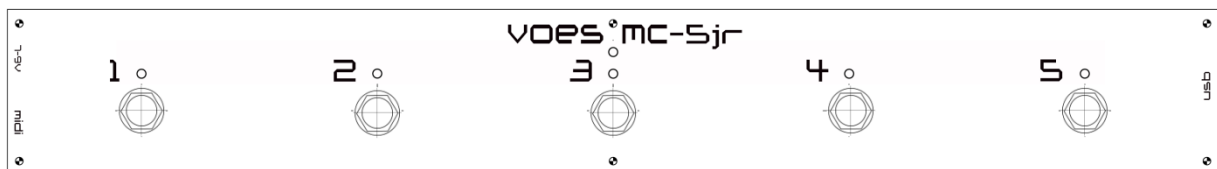
Instead of using precious resources for editing on the hardware, which is a PITA to use, we thought it would be better to give you an excellent, easy to use Editor and extra features.

The **MC-5jr/5/10** has 10/20 software buttons, divided over 2 pages. Each button has up to 4 commands. As there are only 5/10 physical buttons, there has to be a way to select the *other* 5/10 buttons. You can do this by either creating a **Page** button, which toggles between buttons 1-5/1-10 and 6-10/11-20, or by using press-and-hold to toggle each button separately. A combination of both is also a possibility.

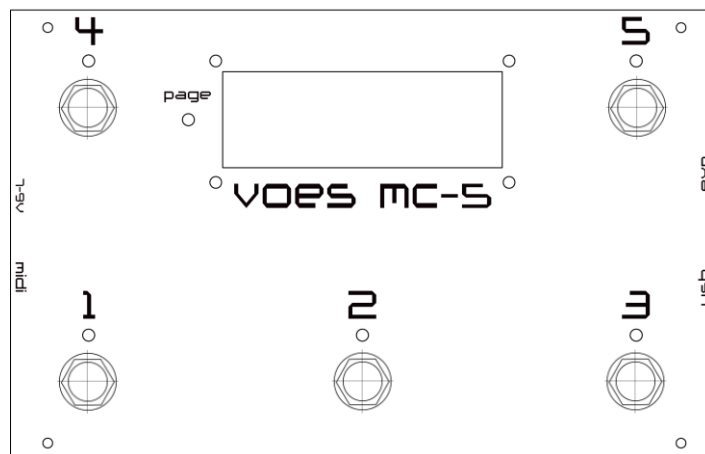
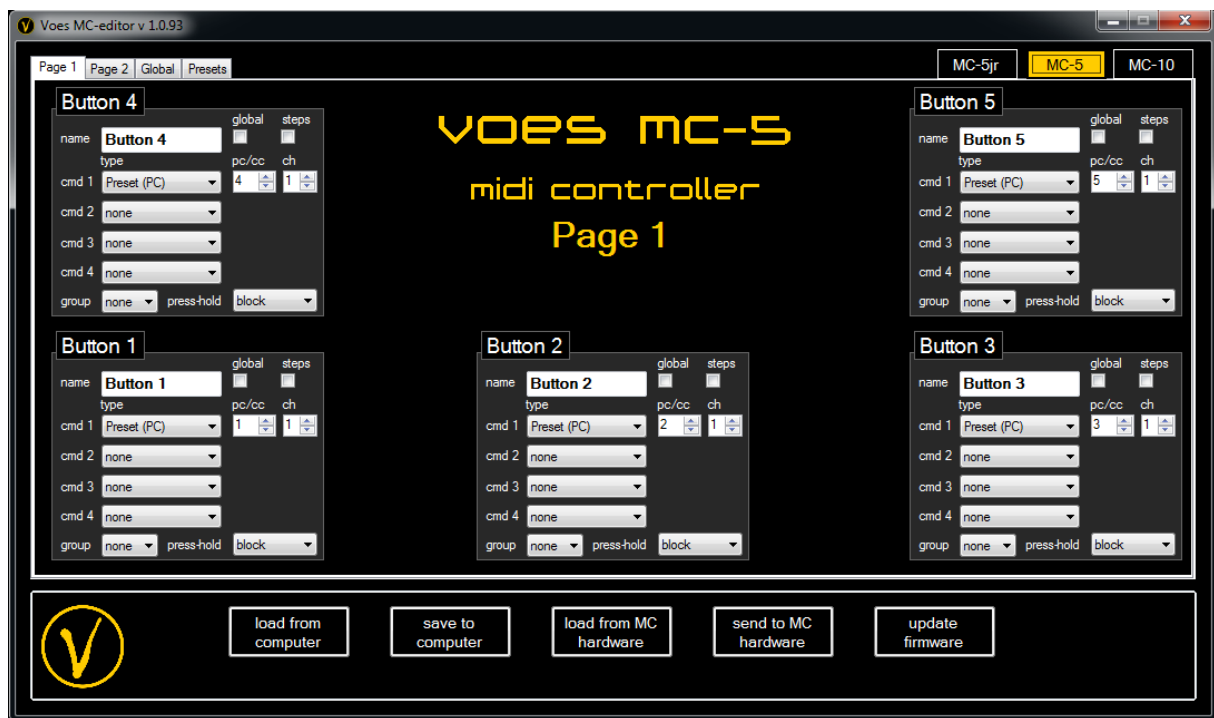
### 3.1 Overview

The **MC-5jr/5/10** has the same layout as the hardware, making programming a breeze.

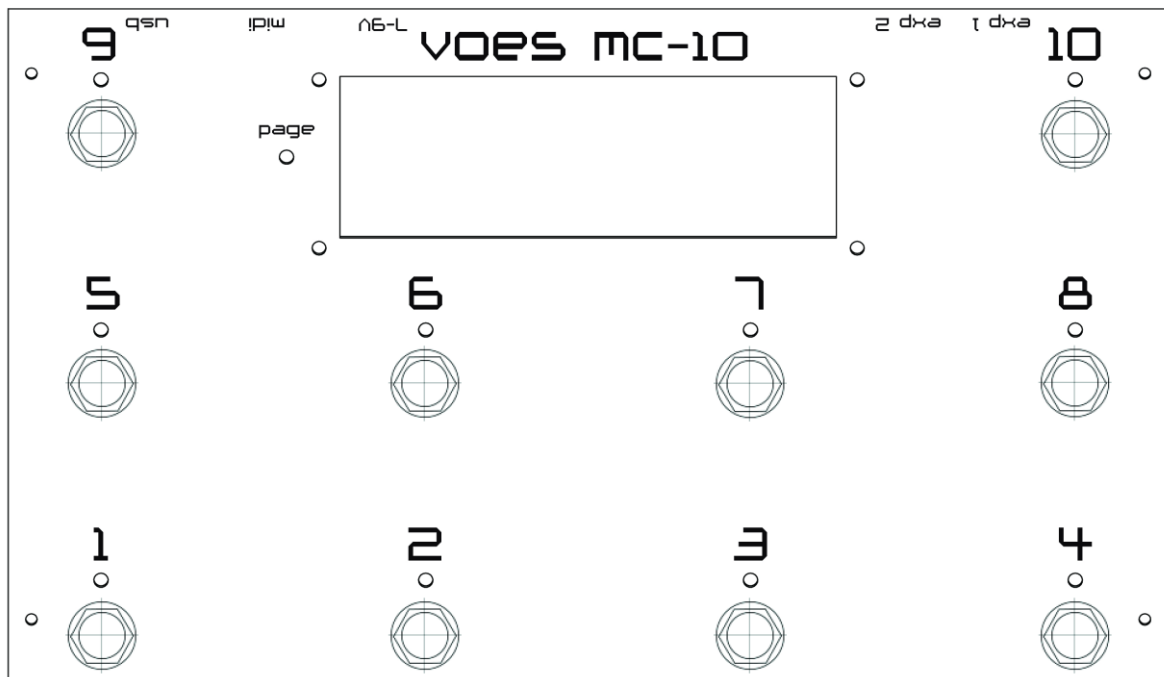
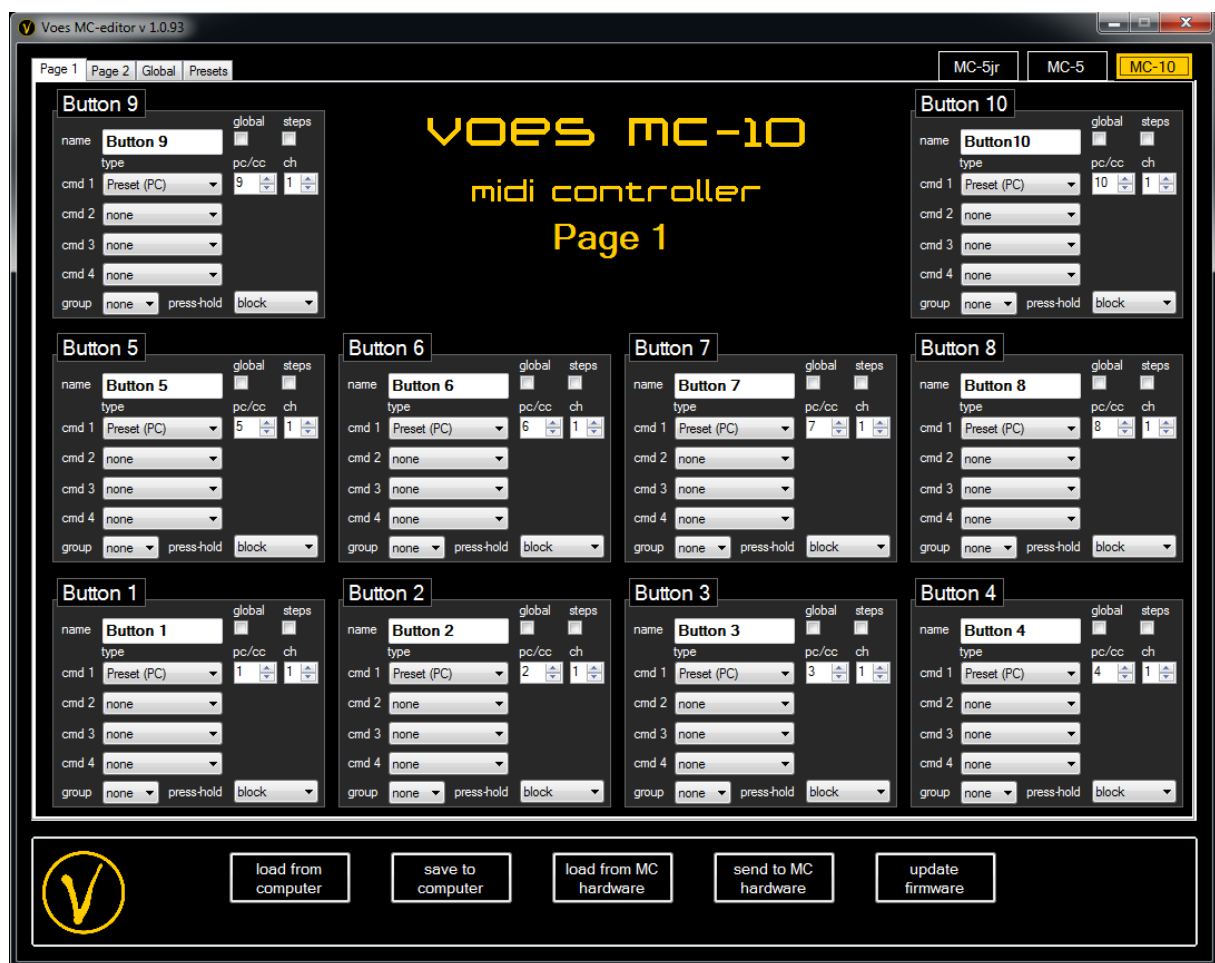
#### MC-5jr



## MC-5

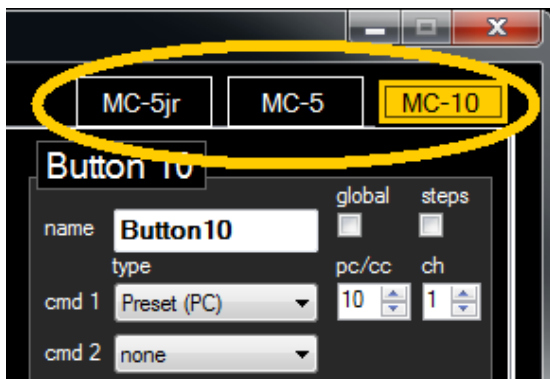


## MC-10



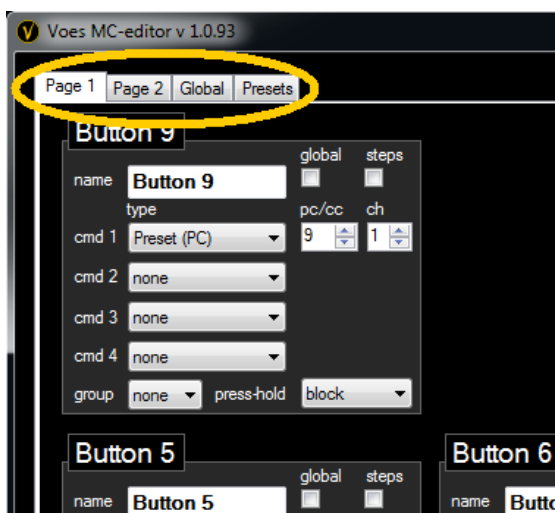
## 3.2 Switching between MC-5jr, MC-5 and MC-10

You can switch between MC versions in the top right corner. The chosen version is saved on data-files you create. Data-files are compatible and exchangeable between MC-5jr, MC-5 and MC-10.



## 3.3 Tab-pages

In the top left corner you can find the tabs **Page 1**, **Page 2**, **Global** and **Presets**.



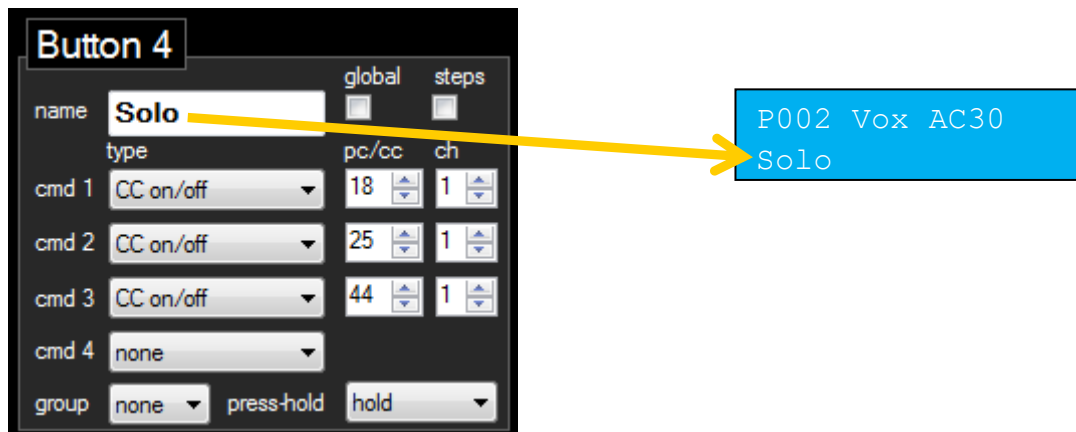
*Page 1* gives you an overview of buttons 1-5/1-10, *Page 2* of buttons 6-10/11-20.

*Global* tab is for editing Global Settings, see section 4.

*Presets* tab is discussed in section 5. (not available on the MC-5jr)

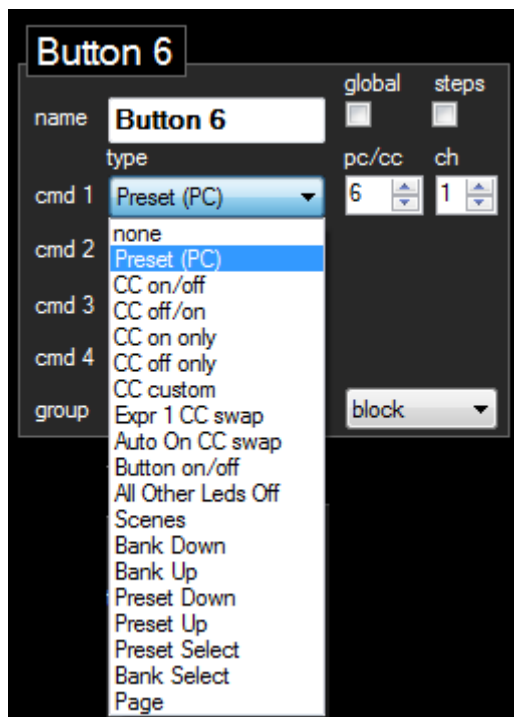
## 3.4 The Button

On other Midi Controllers, a button has 6 parameters for each command. (*Channel On, Command On, Value On, Channel Off, Command Off, Value Off*). We reduced this to 2 parameters: Channel and Command, making programming easier.



Each button can be **named**. If the first command is not a Program Change, this text is displayed on the second line on the **MC-5/10** LCD. Every button can handle 4 commands. Each command has its own **Type**, **PC/CC/Nr** and **Ch** (midi channel).

19 different **Types** are available (11 on command 2, 3 and 4).



## None

None does nothing! If steps is active, this command will be skipped.

## Preset (PC)

Preset (PC) also known as Program Change transmits a program change **PC** on a midi channel **Ch** (1-16).

Depending on **Preset Offset** in *Global Settings* (see section 4), PC range is 0-127 or 1-128.

You can change the name of the first 64 presets (see section 5).



## CC on/off

ON sends a control change **CC** (1-127) on **Ch** (1-16) with **Value 127** (maximum).

OFF sends exactly the same **CC** with **Value 0** (minimum).

## CC off/on

This is the opposite of the previous type.

ON sends a control change **CC** (1-127) on **Ch** (1-16) with **Value 0** (minimum).

OFF sends exactly the same **CC** with **Value 127** (maximum).

## CC on only

This type always sends **Value 127** on each press on **CC** (1-127) on **Ch** (1-16). This command is ideal for Tap-tempo.

The corresponding led will blink briefly.

## CC off only

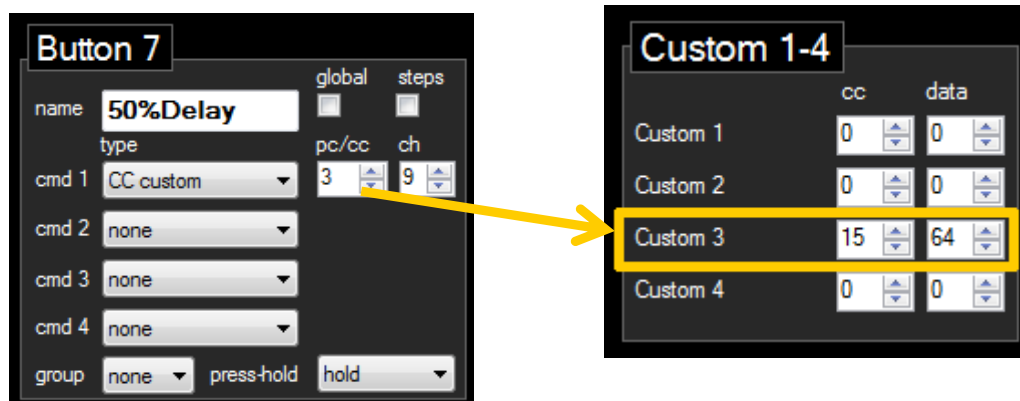
This type always sends **Value 0** on each press on **CC** (1-127) on **Ch** (1-16).

The corresponding led will blink briefly.

## CC custom

A bit different is **CC custom**. It points to a custom **CC** and **Value** command found in *Global Settings* (see section 4).

E.g. **CC custom 3** sends **CC 15** with **Value 64** on **Ch 9**.



The corresponding led will blink briefly. A total of 8 CC customs are available.

## Expr1 CC Swap *(not available on the MC-5jr)*

Expr1 CC Swap is a nice feature to change your Expr1 Pedal, e.g. from Wah to Volume.

ON replaces the **CC** and **Ch** of the regular Expr1 settings.

OFF returns to the regular settings found in *Global Settings* (see section 4).

## Auto On CC Swap *(not available on the MC-5jr)*

Auto On CC Swap can be useful in some situations. For example you could have 3 FX (wah, rotary, phaser). You want to control freq, speed and depth of each with one pedal, and you don't gonna use them together. By setting freq, speed and depth to the same controller (**Expr 1 Pedal**), wah, rotary and phaser would all change. Using the Auto On CC Swap command would only turn ON the FX you want.

ON replaces the **CC** and **Ch** of the regular Expr1 Auto On settings.

OFF returns to the regular settings found in *Global Settings* (see section 4).

## Button on/off

Turns another Button On or Off.

**Caution!** You can create an endless loop. E.g. Button 1 turns Button 2 On and Button 2 turns Button 1 On.

## All Other Leds Off

In some cases, there might be a conflict with the visual leds on/off layout and the actual on/off state of the connected musical instrument. Using the **All Other Leds Off** command can solve this problem.

## Scenes *(only available as first command)*

The **MC-5jr/5/10** is capable of handling scenes, a *Fractal Audio Systems*™ feature.

When a Scene button is activated, all other Scene buttons will be turned off. Scenes CC (default CC34) can be changed in *Global Settings* (see section 4).

Button 16		global	steps
name	Tremolo	<input checked="" type="checkbox"/>	<input type="checkbox"/>
type	Scenes	pc/cc	ch
cmd 1	Scenes	5	1
cmd 2	none		
cmd 3	none		
cmd 4	none		
group	none	press-hold	hold

## Bank Down / Bank Up *(only available as first command)*

Bank Down/Up selects the first preset number and decreases/increases it with the count of all the presets on both pages.



E.g. buttons 1, 2, 3 are defined as **Preset (PC)** Buttons with respective values 11, 12, 13.

If you push button 5 **Bank Up**, the **MC-5jr/5/10** will seek the first PC value (11) and will add the count of all Preset buttons (3) giving you 11 + 3 = 14, 15, 16.

On the first line of the LCD, Bank and preset range are shown. Second line shows 7 characters of the first preset name and the last preset name of the bank to help you orientate.

Bank 2 P9-16  
Supro ..Dumble

## Preset Down/Preset Up *(only available as first command)*

Preset Down/Up is a function that is not often included in other Midi Controllers. You can decrease/increase the current preset number. Only useful when 0 or 1 preset is programmed on a Page.

If no preset is programmed on a Page, default start preset is 1 on Midi Channel 1.

## Preset Select *(only available as first command)*

When clicking on a **Preset Select** button, all leds will blink green/blue and all buttons are connected to their respective Preset number. E.g. clicking on button 4 will bring you to preset 4. After selection, buttons will go back to their programmed state.

## Bank Select *(only available as first command)*

When clicking on a **Bank Select** button, all leds will blink red and all buttons are connected to their respective Bank number. E.g. clicking on button 3 will bring you to bank 3. After selection, buttons will go back to their programmed state.

## Page *(only available as first command)*

There are two ways to select another page.

Using a **Page** button toggles between page 1 and 2, and changes all buttons at once. The page-LED (above LED 3 on the **MC-5jr** / along the LCD on the **MC-5/10**) will be ON to indicate you're on page 2.

*(Be aware that in order to go back you need to program a **Page** button on each page.)*

Or you can change one button to its respective button on the other page by press-and-hold (see *section 3.5*). E.g. press button 2 activates button 2, press-and-hold button 2 activates button 12. press-and-hold button 2 again activates button 2.

Buttons on Page 1 are indicated by a blue or green led. Buttons on Page 2 by a red led.

If the first command is a Program Change the preset name will be displayed on the first line of the **MC-5/10** LCD. Presets on Page 2 have "\*" as prefix.

P002 Vox AC30

P012\*Badger18

## 3.5 Global, Steps, Group, Press-and-Hold

### Global

Button 4

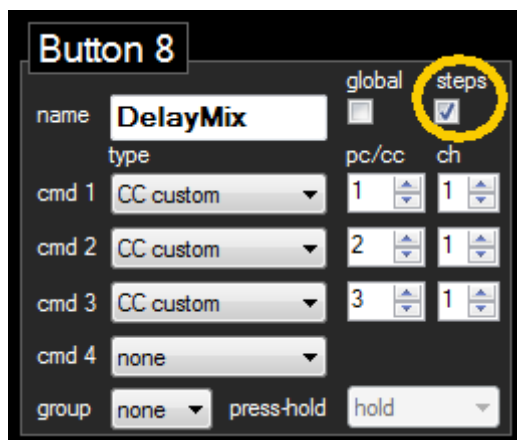
name	Delay	global	steps
type	CC on/off	pc/cc	ch
cmd 1	CC on/off	44	1
cmd 2	none		
cmd 3	none		
cmd 4	none		
group	none	press-hold	hold

Global buttons in On status, will be retrigged on a Program Change. Global buttons are only global on their page.

When using groups, this function is not available.

## Steps

When activated, only one command will be executed. When using groups, this function is not available.



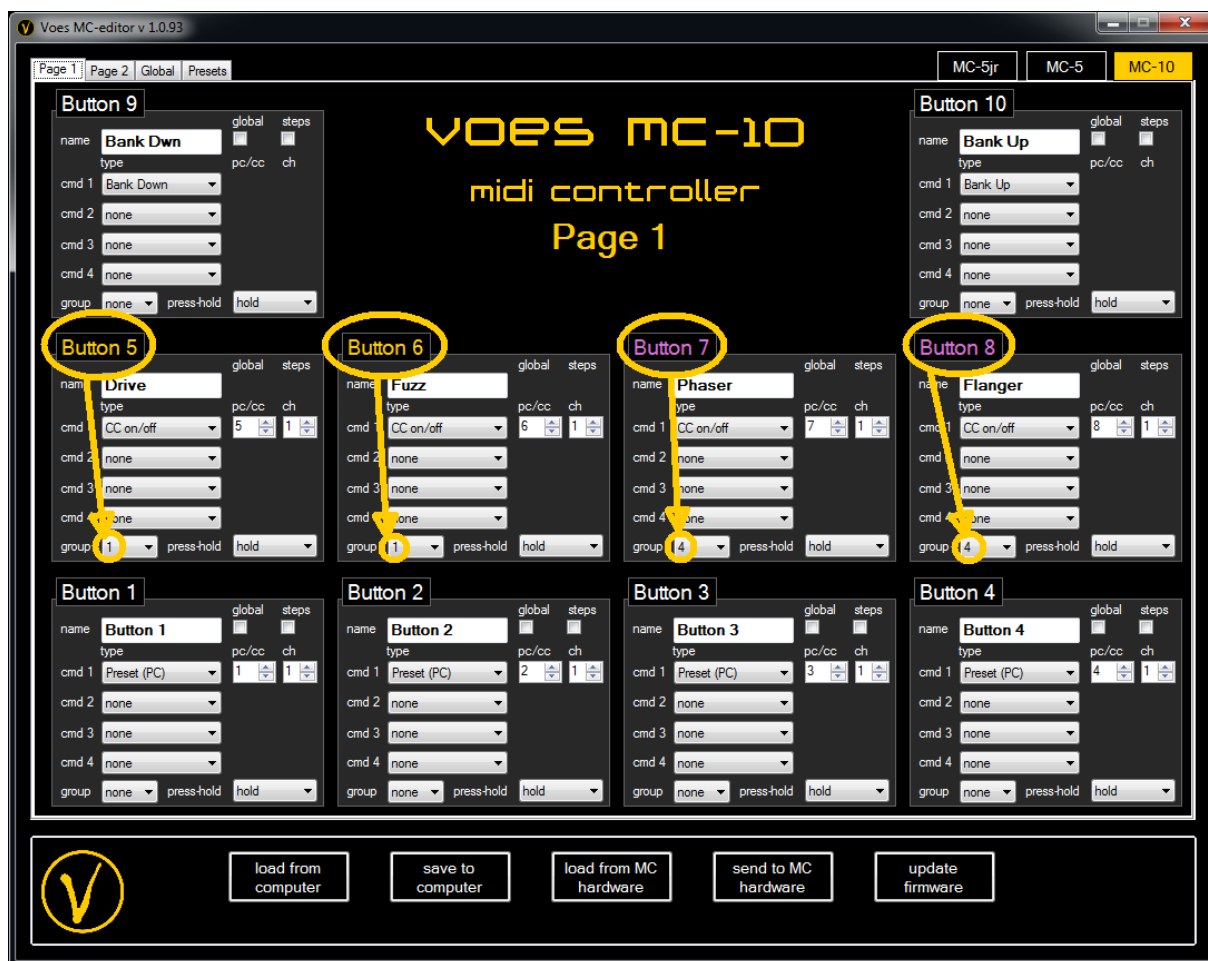
E.g. on the left:

first press      command 1  
 second press    command 2  
 third press      command 3  
 fourth press     command 1  
 (4 is skipped since it's command is set to **None**)  
 fifth press       command 2  
 ...

With Steps you can't use **Button on/off**. This command will be changed to **nothing**.

If **Reset Steps** is enabled, which you can find in *Global Settings* (see section 4), steps will reset to the first step after 1 second of non-use.

## Groups



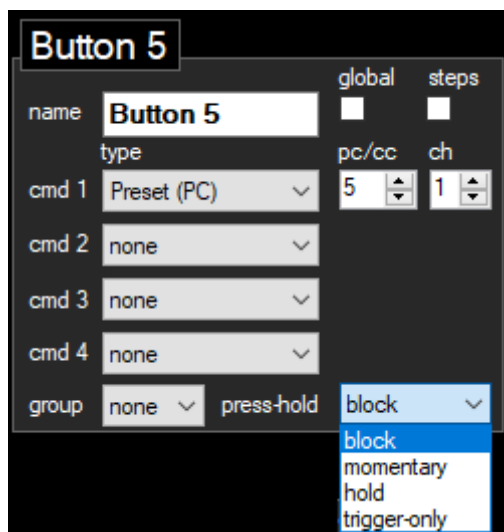
You can group buttons in one of **4** different button groups. Selecting a button group changes the color of the button (on the editor!) into yellow (1), orange (2), green (3) or purple (4).

If a button is pressed, which is part of a button group, all other buttons in that group will be turned OFF and then the selected button will be activated. It's a very nice feature if you have FXs that are similar but never used together (like different drives) and this feature will avoid tap-dancing.

Group buttons are only grouped together on their respective page.

When using groups, *global* and *steps* are not available because it can cause conflicts.

## Press-and-Hold



Using a Page button toggles between buttons 1-5/1-10 and 6-10/11-20.

You can also toggle each button separately by press-and-hold.

When activated, it will change a button to the respective button on the other page by press-and-hold. E.g. press-and-hold button 4 activates button 14, press-and-hold button 12 activates button 2. The press-and-hold time is approximately 0.5 seconds (short) or 1 second (long) depending on the setting in *Global Settings* (see section 4).

Each button on the 1<sup>st</sup> page can be set to one of four types:

**Block:** press-and-hold does not work.

**Momentary:** press-and-hold will activate the button on the 2<sup>nd</sup> page once and will return back to the 1<sup>st</sup> page on the next press. (\*)

**Hold:** press-and-hold will activate the button on the 2<sup>nd</sup> page and stay there.

**Trigger-Only:** press-and-hold will activate the button on the 2<sup>nd</sup> page but will stay on the 1<sup>st</sup> page. (\*)

Buttons on the 2<sup>nd</sup> page are always type hold.

(\*) Difference between **Momentary** and **Trigger-Only** is subtle and differs in the way the leds behave. Here are two scenarios to explain this.

#### *Scenario 1:*

Button x is on *normal press* **Preset 1 (PC)** and on *press-and-hold* **Preset 6 (PC)**. Normal press is used mostly, press-and-hold is used occasionally. Here you want to use **Momentary**.

On *normal press* PC 1 will be activated and led will turn green/blue.

On *press-and-hold* PC 6 will be activated and led will turn red.

Pressing again (normal press), PC 1 will be activated and led will turn green/blue.

This way you always see which Preset is selected.

#### *Scenario 2:*

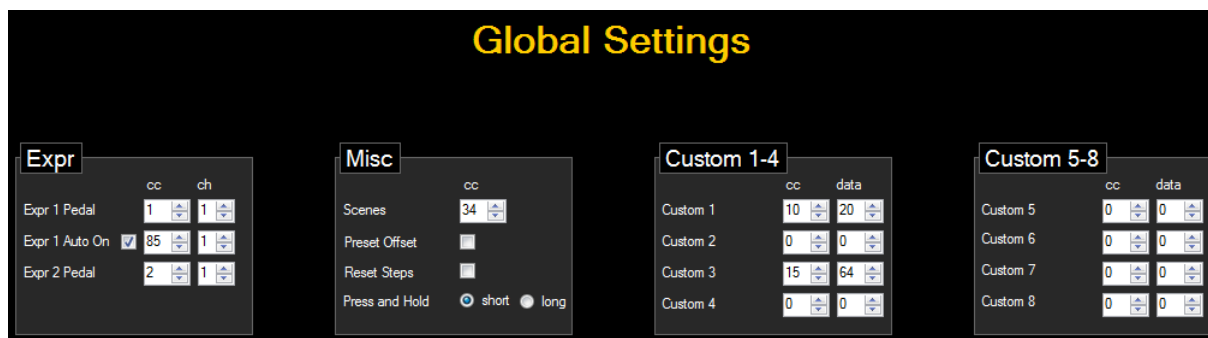
Button x is on *normal press* **Tremolo On/Off** and *press-and-hold* **Controls the Speed**. Here you want to use **Trigger-Only**.

On *normal press* Tremolo will be turned On or Off and led will turn green/blue or off.

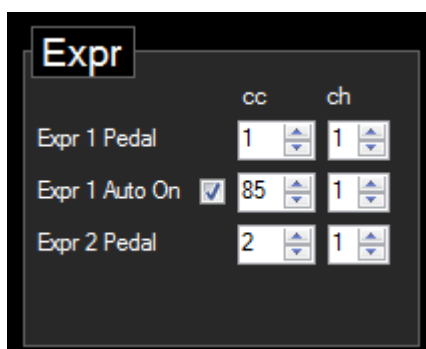
On *press-and-hold* Speed will change, but the led will stay green/blue or off depending on the state of the Tremolo.

This way you always see the state of the Tremolo.

## 4.Global Settings



### 4.1 Expr (not available on the MC-5jr)



#### Expr 1 Pedal

CC (1-127) on midi channel **Ch** (1-16). Do not forget to calibrate your pedal! (see section 7)

#### Expr 1 Auto On

E.g. Wah Freq is controlled with CC 1, Wah On/Off is controlled with CC 85.

Instead of sacrificing a button to turn the Wah On/Off, you can use the **Auto On** feature.

Set Expr 1 Pedal CC to **1** and set Expr 1 Auto On **checked** and to CC **85**.

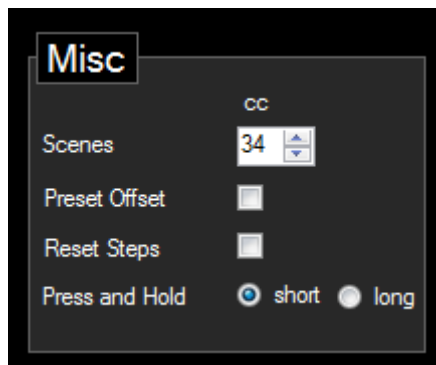
Moving Expression Pedal 1 higher than 5%, turns Wah On. If it is below 5%, it will turn Off.

#### Expr 2 Pedal (only available on MC-10)

CC (1-127) on midi channel **Ch** (1-16). Do not forget to calibrate your pedal! (see section 7)



## 4.2 Misc



### Scenes

**MC-5jr/5/10** is capable of handling scenes, a *Fractal Audio Systems*™ feature. Here you define the Scenes CC (default 34).

### Preset Offset

Set PC range to 0-127 or 1-128.

### Reset Steps

If enabled, steps will return to the first step after 1 second of non-use.

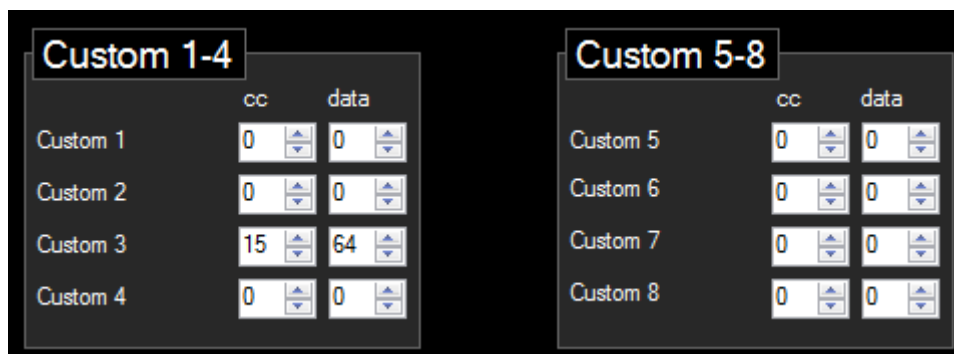
### Press and Hold

Choose between a short or long time to engage press and hold.

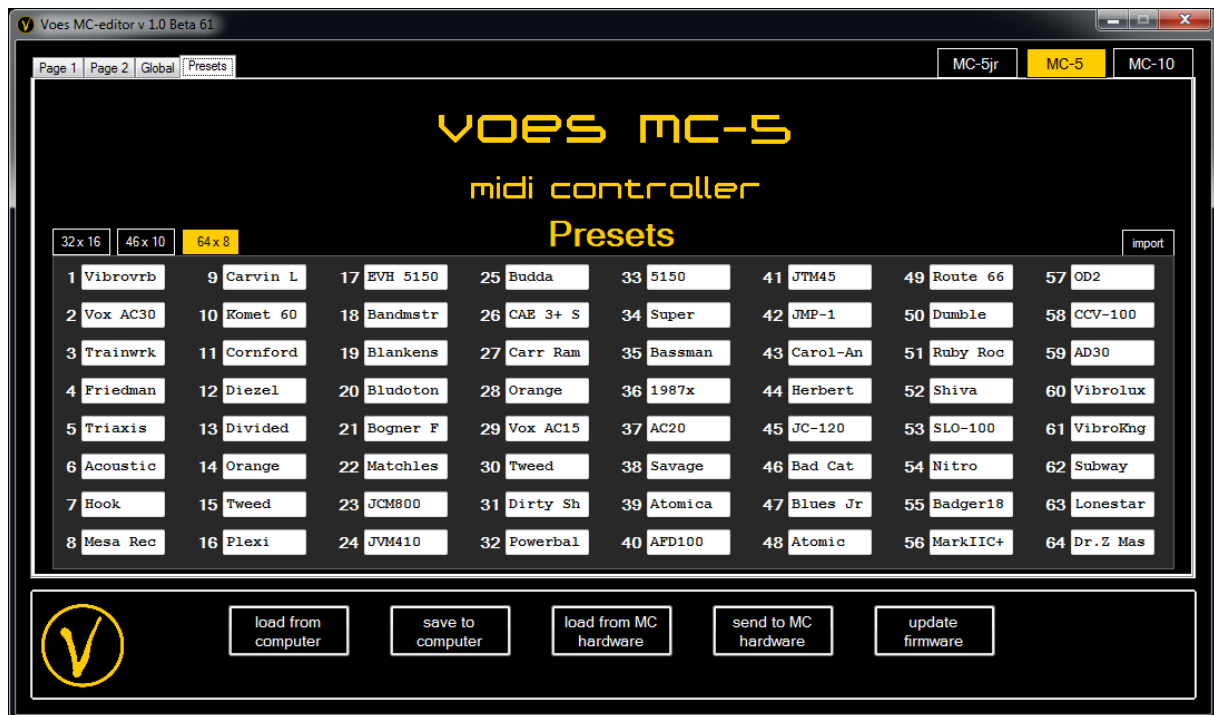
## 4.3 Custom

A normal CC on the **MC-5jr/5/10** sends **Value 0** (minimum) or **127** (maximum). In most cases this is sufficient.

However sometimes you might want to have different values. You can save eight custom **CC** (0-127) and **value** (0-127) values. On a button you can select one of those with a **CC custom** command.

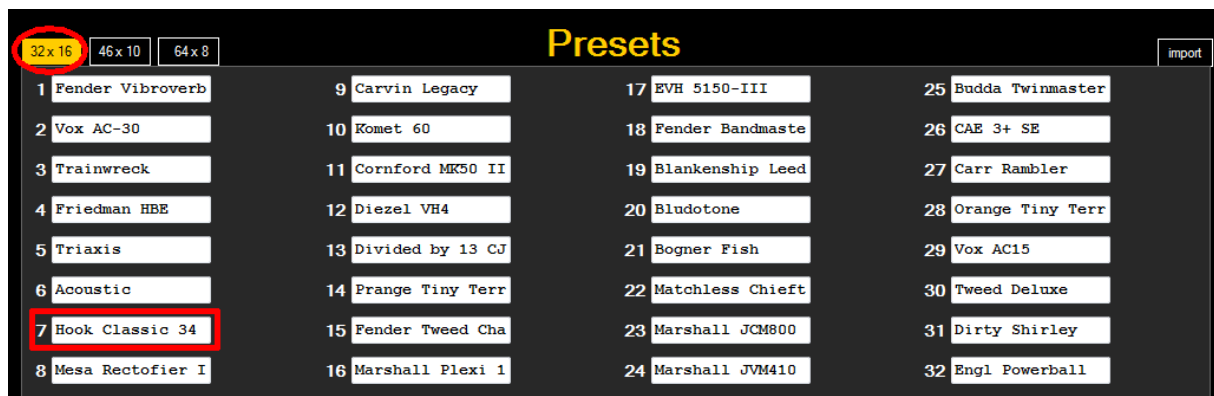


## 5. Presets *(not available on the MC-5jr)*



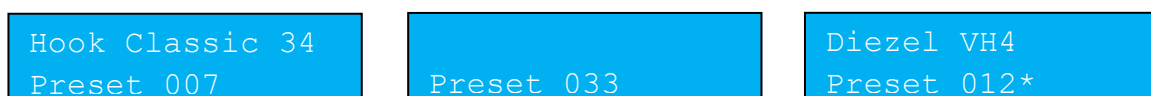
Here you can name the first 32 presets with 16 characters or the first 46 presets with 10 characters or the first 64 presets with 8 characters. Your choice!

### Preset names 32 x 16



Whenever a Program Change is the first command of a button, this name will be displayed on the **MC-5/10** LCD. Presets higher than 32 will be displayed as "Preset xxx". Presets on Page 2 have "\*" added.

e.g.:



## Preset names 46 x 10 or 64 x 8



Whenever a Program Change is the first command of a button, this name will be displayed on the first line of the **MC-5/10** LCD. Presets higher than 46 (46x10) / 64 (64x8) will be displayed as “Preset xxx”. Presets on Page 2 have “\*” as prefix.

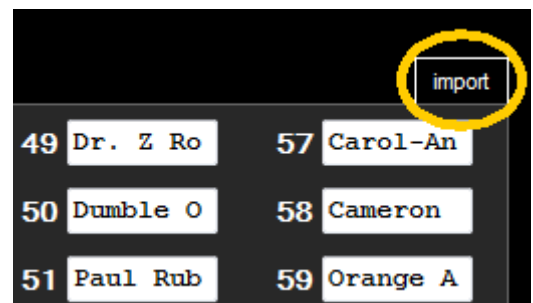
e.g.:



## Importing preset names

Use the **import** button in the right corner to import preset names from any **TXT** or **CSV** file.

One preset per line. Names will be automatically truncated.



## 6. Load/Save/Update



You can save and load settings from/to the computer and from/to **MC-5jr/5/10**.

Data-files are compatible and exchangeable between **MC-5jr**, **MC-5** and **MC-10**.


When sending data-files to **MC-5jr/5/10**, please wait until the **MC-5jr/5/10** reboots.

### Updating firmware

Most recent firmware and software can be found on [www.voes.be](http://www.voes.be)

Booting the **MC-5/10** will display the installed firmware:

```
Voës MC-5jr/5/10  
v1.0.95
```

Another way to find the firmware version (especially useful for the **MC-5jr**) is by clicking on the  logo in the left bottom corner. An info window with the editor version will appear. If data is loaded from the **MC-5jr/5/10**, both firmware version and connected hardware are shown.

When updating firmware, keep in mind that the firmware file needs to be placed in the program directory.

A batch program will be started. Wait until it stops, and close the window. *(We could make it auto close, but if any error appears it's easier to report this way.)*



## 7. Calibrating Expression Pedals

Before using an expression pedal, it needs to be calibrated. This can of course not be done on the editor but on only the **MC-5jr/5/10** itself. You only need to do this once (Calibrating values are saved in memory).

**Important!** After you calibrate your pedals, use the editor to back up your settings.

To activate the calibrating menu, use following instructions:

### MC-5

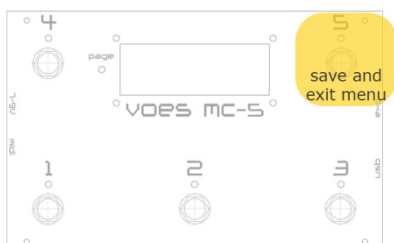
#### calibrate expr. pedal 1



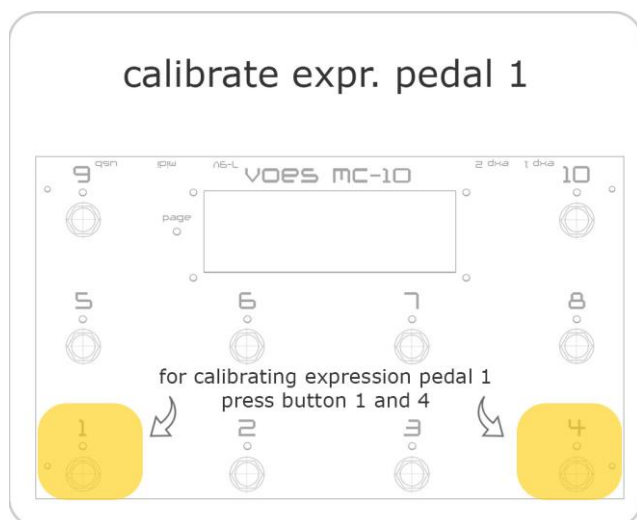
#### move expr. pedal 1

a progress bar moves on the LCD

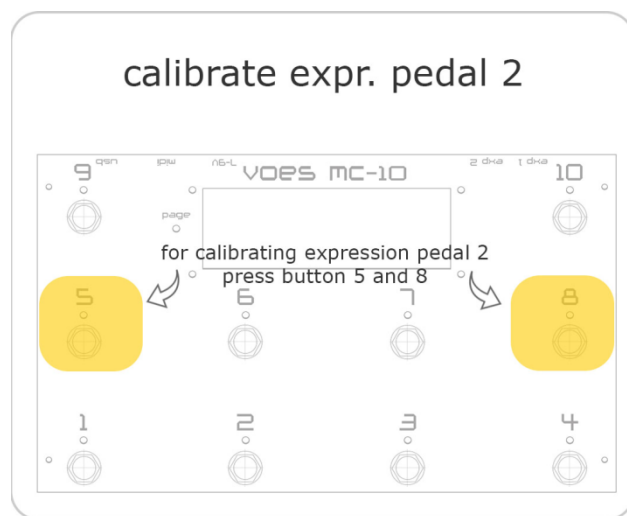
#### exiting menu



## MC-10 expr pedal 1

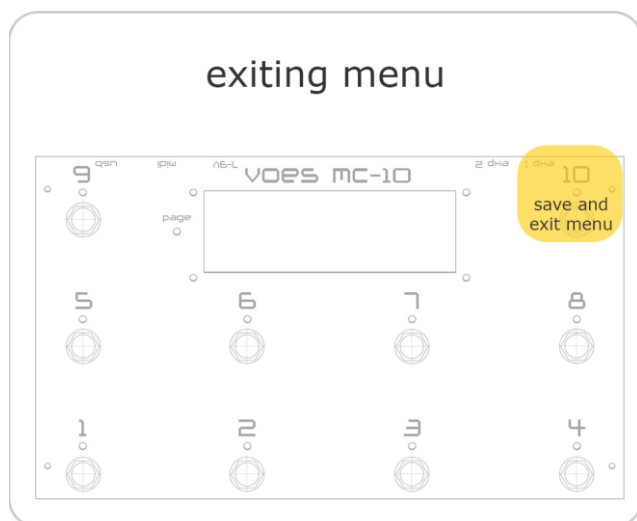


## MC-10 expr pedal 2



## move expr. pedal 1

a progress bar moves on the LCD



## move expr. pedal 2

a progress bar moves on the LCD

